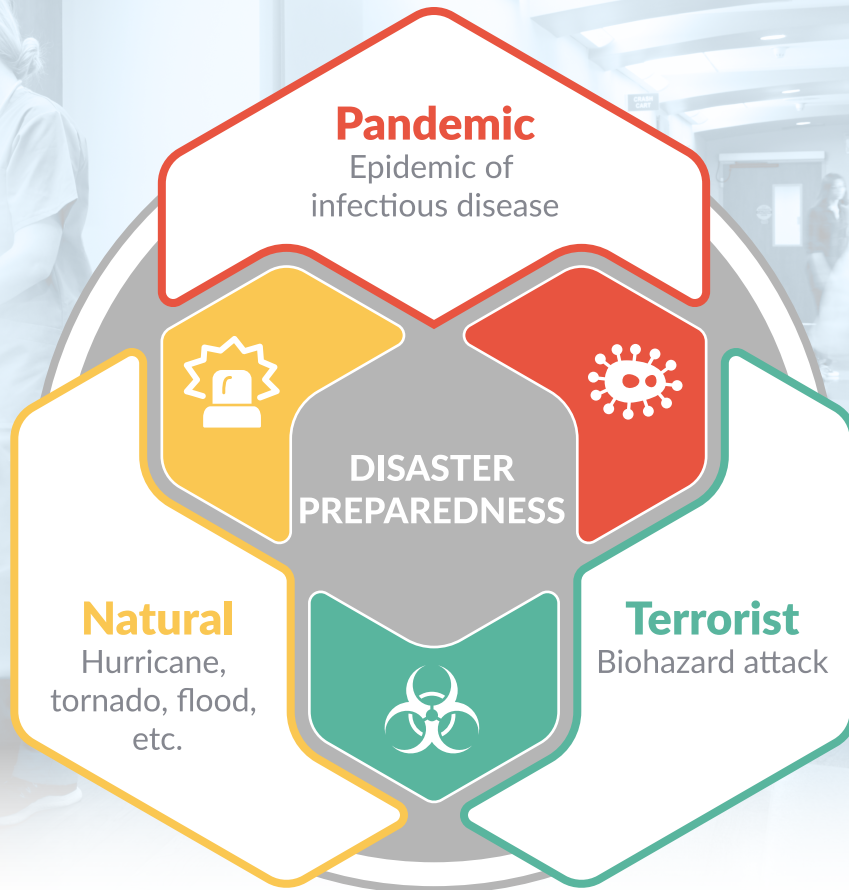


# Disaster Preparedness

PORTABLE SUCTION • OXYGEN THERAPY • WALL SUCTION



# PORTABLE SUCTION PRODUCTS

## Care-e-vac®3 Portable Battery Powered Suction Pump (AC & Battery)

Disaster Preparedness **Quick, mobile, powerful airway clearing needs**

The Care-e-vac®3 is a high-vacuum and high-flow AC/DC-powered suction unit.

- Provides fast, “full suction” capability for emergency needs (handles high viscosity, tenacious secretions)
- High flow - 50 L/min provides resuscitation-level suction power
- The unit is compact, weighs only 10.5 lbs. and has a very small footprint
- Permanently attached power cord prevents loss of cord
- Universal collection canister bracket fits most collection canisters up to 1200cc



## Instavac® I Portable Suction Pump (AC Only)

Disaster Preparedness **Free standing continuous & intermittent suction for 24/7 suction**

The Instavac® I is a multi-purpose unit, capable of supporting routine airway aspiration, resuscitation, nasogastric intermittent suctioning and chest drainage. Optional dual vacuum can be ordered. Also available in higher vacuum continuous-only model, Instavac® C.

- Extremely quiet, efficient carbon vane pump and air-cooled housing can run 24/7 uninterrupted
- Viable option when wall vacuum is not available
- Provides reliable suction for patients in quarantine who do not have access to hospital wall vacuum



## Tote-L-vac® Portable Suction Pump (AC & Battery)

Disaster Preparedness **Suction for EMS needs**

Tote-L-vac® is the perfect battery powered portable suction unit for EMS, home health, hospital patient transport and wherever battery power is a requirement.

- Ultra-portability; compact and lightweight (9 lbs)
- Accepts both 800cc and 1200cc standard collection canisters of any make
- Provides strong 0-550 mmHg vacuum and 36 L/min flow for up to 30 minutes per battery
- 12 volt D.C. adapter available



# OXYGEN THERAPY PRODUCTS

## Oxygen Flowmeters

Disaster Preparedness **Most common need is to provide and monitor oxygen flow**

Many hospitals may not be adequately supplied with oxygen flowmeters to handle high volume disaster patient numbers. Planning points toward full stocking of all wall outlets above normal needs and warehousing for expanded requirements from tank sources through manifolds.

### Standard Adult Flowmeters

#### 0-15 L/min, 0-30 L/min & 0-70 L/min Oxygen & Medical Air Flowmeters

- Features large easy-to-read increments improved visibility dark flow levels on white background
- Is about 1/3 smaller than full-sized flowmeters
- Available with a power outlet



### Neonatal & Pediatric Flowmeters

#### 0-1 L/min & LoFlo® 3.5 L/min Oxygen Flowmeters

- Accuracy of  $\pm 0.1$  L/min on 0-1 L/min model and  $\pm 0.125$  L/min on LoFlo® 3.5 L/min or  $\pm 10\%$  of reading (whichever is greater)
- White background improves visibility



### Twin Oxygen Flowmeters

#### Double the number of oxygen capable outlets during a time of crisis

- Two Pressure Compensated Flowmeters mounted onto a “Y” adapter
- Unique compact design still accommodates double humidifiers and nebulizers
- Available with a power outlet



Connection Type	3.5 L/min Oxygen	15 L/min Oxygen	30 L/min Oxygen	70 L/min Oxygen
DISS Handtight	FM-03UO-DH	FM-15UO-DH	FM-30UO-DH	FM-70UO-DH
Ohmeda	FM-03UO-OH	FM-15UO-OH	FM-30UO-OH	FM-70UO-OH
Chemetron	FM-03UO-CH	FM-15UO-CH	FM-30UO-CH	FM-70UO-CH
Puritan Bennett	FM-03UO-PB	FM-15UO-PB	FM-30UO-PB	FM-70UO-PB
Oxequip	FM-03UO-XQ	FM-15UO-XQ	FM-30UO-XQ	FM-70UO-XQ
MedStar	FM-03UO-MS	FM-15UO-MS	FM-30UO-MS	FM-70UO-MS
Schrader	FM-03UO-SH	FM-15UO-SH	FM-30UO-SH	FM-70UO-SH

Many configurations of Flowmeters are available. Please contact your local representative or visit our website, [www.ohiomedical.com](http://www.ohiomedical.com), to configure the model that you need.

# OXYGEN THERAPY PRODUCTS

## DurO2 Oxygen Pressure Regulator

Disaster Preparedness **Delivery of oxygen from compressed gas cylinders**

For use with oxygen delivery device or for delivery of oxygen to a transport ventilator.

- Lightweight brass core design; weighs 0.5 kg (1 lb 2 oz)
- DISS fitting for bubble humidifier or hose barb for standard cannula use
- CGA 540 connection for large tanks CGA 870 connection for small tanks
- Ranges of 0-4, 0-8, 0-15 or 0-25 L/min



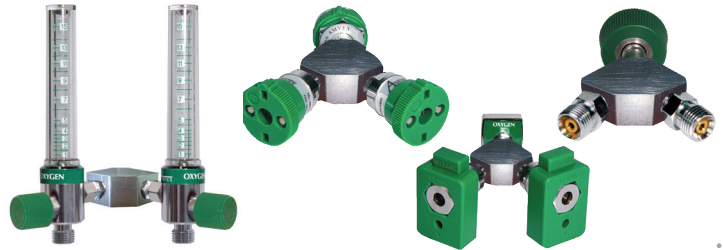
## Medical Gas Outlet Expansion

Disaster Preparedness **Y-blocks enable healthcare facilities to expand capabilities of existing outlets**

Ohio Medical Y-Block Assemblies are offered in standard US and International connections. MR Conditional options are also available.

### Can be used with:

- Flowmeters
- Vacuum Regulators
- Couplers
- Adapters
- DISS Connectors



# PORTABLE SUCTION FOR AIR OR O2 TANKS

## Venturi Backpack Suction Regulators

Disaster Preparedness **Provides suction without electricity**

The unique Venturi Backpack with the Ohio Vacuum Regulator delivers quiet, high-flow, regulated vacuum from a compressed medical air or oxygen gas source through a normal hospital vacuum regulator.

- Not dependent on AC/DC power or wall vacuum
- 30 L/min gas consumption only when ON
- Simple ON/OFF slide switch conserves gas



### Recommendation:

- Use in rooms that do not have "piped-in" wall suction but have available oxygen or air outlets. Use a Y adaptor on the O2 inlet to provide both oxygen therapy and a ready, high-vacuum, high-flow suction source
- Establish mobile triage with O2 or medical air cylinder tanks with the venturi backpack and with Push-To-Set™ Vacuum Regulators

# WALL SUCTION PRODUCTS

## Wall Vacuum Regulators

**Disaster Preparedness** Need: vacuum regulator in every suction outlet

Most Hospitals are not adequately supplied with wall vacuum regulators to handle high volume disaster patient numbers. Ohio Medical Push-to-Set™ (PTS) and Amvex brand vacuum regulators are specially designed for a variety of clinical applications including airway, nasogastric suctioning, surgical suctioning and C.A.S.S. procedures as well as chest drainage.

### Recommendation:

- Prepare in advance by filling all wall vacuum outlets with a vacuum regulator
- Use with Venturi Backpack for transport and mobile suction needs where gas is available and wall vacuum is not
- Available in Adult, Pediatric and Neonatal models
- Innovative highly accurate, tough digital gauges and customary analog gauges available



## Overflow Safety Traps

**Disaster Preparedness** Prevent spread of infectious fluids

Overflow Safety Traps guard against accidental overflow and protect regulators, wall outlets and central pipeline systems that may become contaminated or blocked by infected contaminated secretions.

- Clear, shatter-resistant autoclavable jars
- Steam autoclavable; except Sure-Trap™
- Unique float design ensures maximum vacuum flow and positive shutoff



## Hydrophobic Filters

**Disaster Preparedness** Prevent aerosolized infected bodily fluids into local environment

Disposable filters help protect patients and practitioners against harmful body fluids that can contaminate vacuum regulators, wall outlets and pipeline systems.

- 99.99% efficiency air particle retention @ 0.3 microns
- Hydrophobic microporous filter removes all aerosols, provides positive final shut-off protection

### They can help:

- Reduce infection risk
- Keep equipment clean
- Protect technicians
- Extend useful product life



tubing x tubing nipple



1/8" NPT threaded x tubing nipple



tubing nipples

# PRODUCT CHECK LIST

## Portable Suction Products

Description	Part Number
Care-e-vac®3	758000
Instavac® I	756000
Instavac® C	757000
Tote-L-vac®	AI4900000



## DurO2 Oxygen Pressure Regulators

Description	Part Number
Extended DurO <sub>2</sub> , 870, LH, 0-4, Barb	6700-0714-800
Extended DurO <sub>2</sub> , 870, LH, 0-15, DISS	6700-0716-800
Extended DurO <sub>2</sub> , 870, RH, 0-25, Barb W/2 DISS	6700-0717-800
Extended DurO <sub>2</sub> , 540, RH, W/2 DISS	6700-0718-800



## Medical Gas Outlet Expansions

Description	Part Number
Y-Block Assembly, Ohmeda, Oxygen, ANSI	YB-CO-OHUO-OH
Y-Block Assembly, Chemetron, Oxygen, ANSI	YB-CO-CHUO-CH
Y-Block Assembly, DISS, Oxygen, ANSI	YB-DM-DCUO-DH



Many configurations of Y-Block Assemblies are available, including International part numbers. Please contact your local representative or visit our website, [www.ohiomedical.com](http://www.ohiomedical.com), to configure the model that you need.

## Portable Suction for Air or O2 Tanks (E&C Cylinders)

Description	Part Number
Venturi Backpack Ejector Module	6700-0690-800



# PRODUCT CHECK LIST

## Wall Suction Products

Description	Part Number
Push-To-Set™ Intermittent Regulator with Chemetron Rectangle Striker (NCG) Adapter and Locking Gland and Overflow Safety Trap	8705-1251-905 (analog) 8705-1351-905 (digital)
Push-To-Set™ Intermittent Regulator with Diamond Adapter and Tubing Nipple	8701-1251-901 (analog) 8701-1351-901 (digital)
Push-To-Set™ Pediatric Intermittent Regulator with Diamond Adapter and Tubing Nipple	8701-1271-901 (analog) 8701-1371-901 (digital)
Push-To-Set™ High Three-Mode Continuous Regulator with DISS Handtight Adapter and Locking Gland and Overflow Safety Trap	8702-1226-905 (analog) 8702-1326-905 (digital)
Push-To-Set™ Low Two-Mode 0-100 mmHg Continuous Regulator with Chemetron Rectangle Striker (NCG) Adapter and Locking Gland	8705-1231-904 (analog) 8705-1331-904 (digital)
Push-To-Set™ Pediatric Continuous Regulator with Diamond Adapter and DISS Male and Overflow Safety Trap, Diss Wing Nut & Gland	8701-1234-908 (analog) 8701-1334-908 (digital)



Many configurations of Vacuum Regulators are available, including Amvex brand (not shown). Please contact your local representative or visit our website, [www.ohiomedical.com](http://www.ohiomedical.com), to configure the model that you need.

## Overflow Safety Traps

Description	Part Number
Overflow Safety Trap with Locking Gland	6700-0365-901
Overflow Safety Trap with DISS Wing Nut & Gland	6703-0365-901
Overflow Safety Trap with DISS Male Adapter	6714-0365-901
Sure-Trap™ with 1/8" x 1/8" NPT Resin Fitting, Package of 12	7725-0365-912



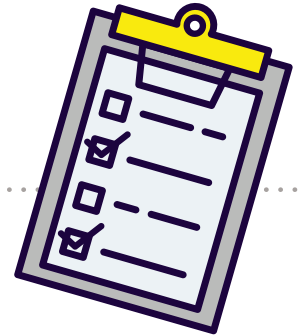
## Hydrophobic Filters

Description	Part Number
Tubing x Tubing nipple, Package of 10	6730-0571-800
Tubing x Tubing nipple, Package of 50	6730-0572-800
1/8" NPT Threaded x Tubing nipple, Package of 10	6730-0581-800
1/8" NPT Threaded x Tubing nipple, Package of 50	6730-0582-800



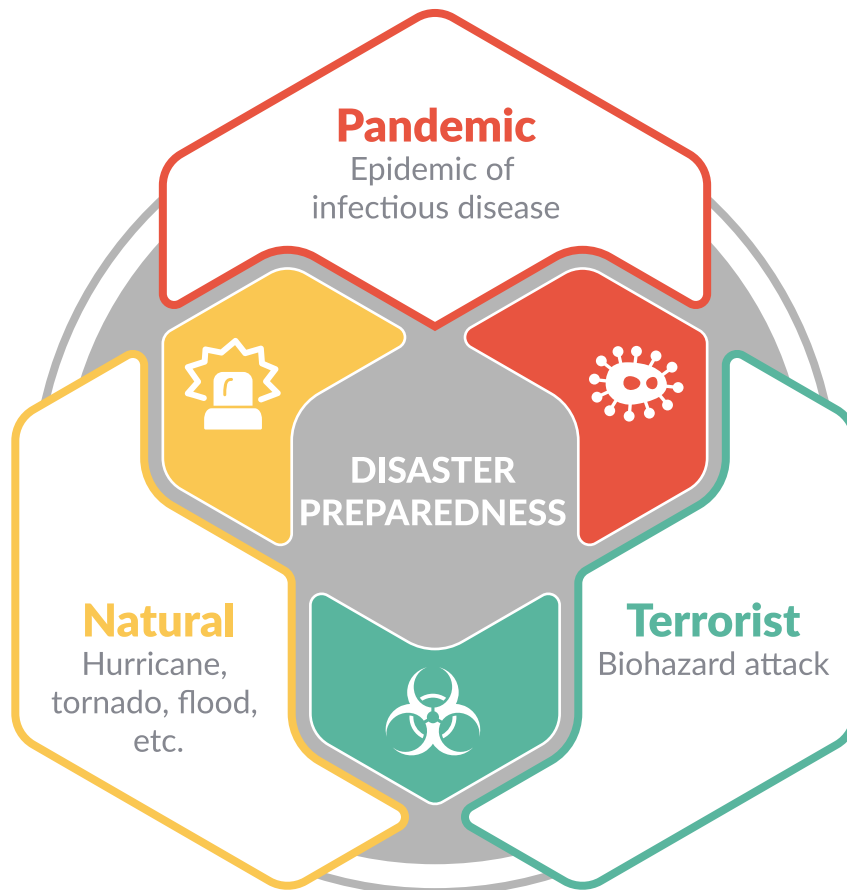
Does your facility's Disaster Preparedness Plan provide reasonable self sufficiency in the event of...

- ⚠️ Electrical outage, hurricanes or other weather related events?
- ⚠️ Sudden influx of O<sub>2</sub> dependent patients (SARS, Avian Flu, H1N1 Flu, Ebola, Enterovirus, etc.)?
- ⚠️ Failure of centrally piped medical vacuum system?
- ⚠️ Failure of centrally piped medical oxygen system?



Portable Suction Aspirators are identified by the US Government as one of the top medical devices needed for Patient Movement Items (PMI)\* during disaster and pandemic occurrences.

\*Defense Medical Standardization Board (DMSB)



Ohio Medical LLC 1111 Lakeside Drive Gurnee, IL 60031 USA | +1-866-549-6446 | www.ohiomedical.com

© 2020 Ohio Medical LLC. All Rights Reserved. This document contains information that is proprietary and confidential to Ohio Medical LLC. Use of this information is under license from Ohio Medical LLC. Any use other than that authorized by Ohio Medical LLC is prohibited. Ohio Medical, Ohio Medical LLC, Care-E-Vac, Tote-L-Vac, Instavac, and the Ohio Medical LLC Logo are registered trademarks and Push-To-Set is a trademark of Ohio Medical LLC U.S. Patent #6,623,463 (Push-To-Set™ Vacuum System) Chemetron is a registered trademark of Allied Healthcare Products, Inc.